

# Welcome

**Lisa Richards—  
Centre Principal  
September 2025**

# Tonight

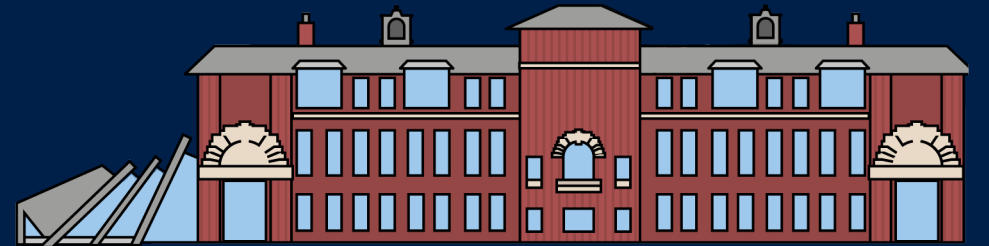
Our vision, philosophy and ethos

Our expectations and how we can work together

Life at ASFC and what to expect

Enrichment and employability

Some practicalities



## OUR VISION

# Transforming lives through learning

## MISSIONS

To engender a love of learning through an excellent standard of Teaching and Learning for all

To promote wellbeing and inspire students and staff to lead fulfilling lives

To lay the foundations for career success

## WE BELIEVE IN

**Ambition and  
Aspiration**

**Excellence and  
Success**

**Equality and  
Respect**

**Maximising  
Opportunities**

**Resilience**



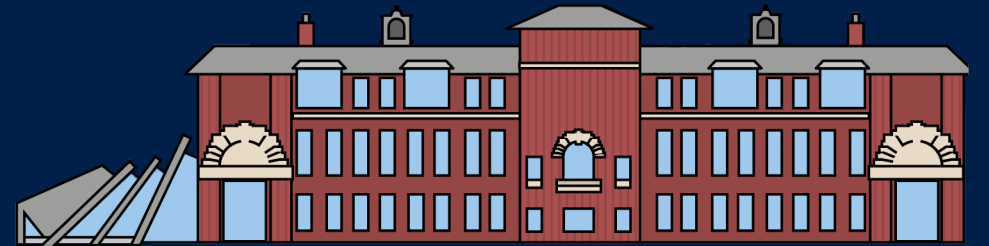
# The Ashton Ethos



Our students are the reason we're all here... we put them at the heart of everything we do!

# Philosophy and Ethos

- Supportive environment
- But... individual responsibility
- Full time student – it's their profession!
- Develop the whole person not just the qualifications
- Take the opportunities: enrichment /work experience
- It's good to be ambitious
- Why can't it be me?



# Every individual plays their part in the success of our community:

- 2,300 students
- From over 60 different schools
- From across Greater Manchester and beyond
- We all bring our different backgrounds and life experiences and become ONE community
- Everyone deserves to feel valued, safe, supported and encouraged
- We are diverse and proud of this

# Your sons and daughters are in capable hands...

- Specialist staff – we are a level 3 provider
- Exceptional support systems for students
- An aspirational, safe and inclusive learning environment
- A wide range of additional opportunities
- A long track record of success

Each one of our 2,300 students is unique and important!

**We want all students to leave us in two years  
with...**

# CHOICES

**A broad, academic level 3 education is the best way to  
ensure this. All our courses provide this.**



# They have every chance of success!

## A level:

- 98% pass rate
- 52% High Grades (A\*-B)
- 79% A\*-C

## BTEC and equivalent

- 99% pass rate
- 90% High Grades (Distinction\* and Distinction)

**These grades open doors and widen choices!**

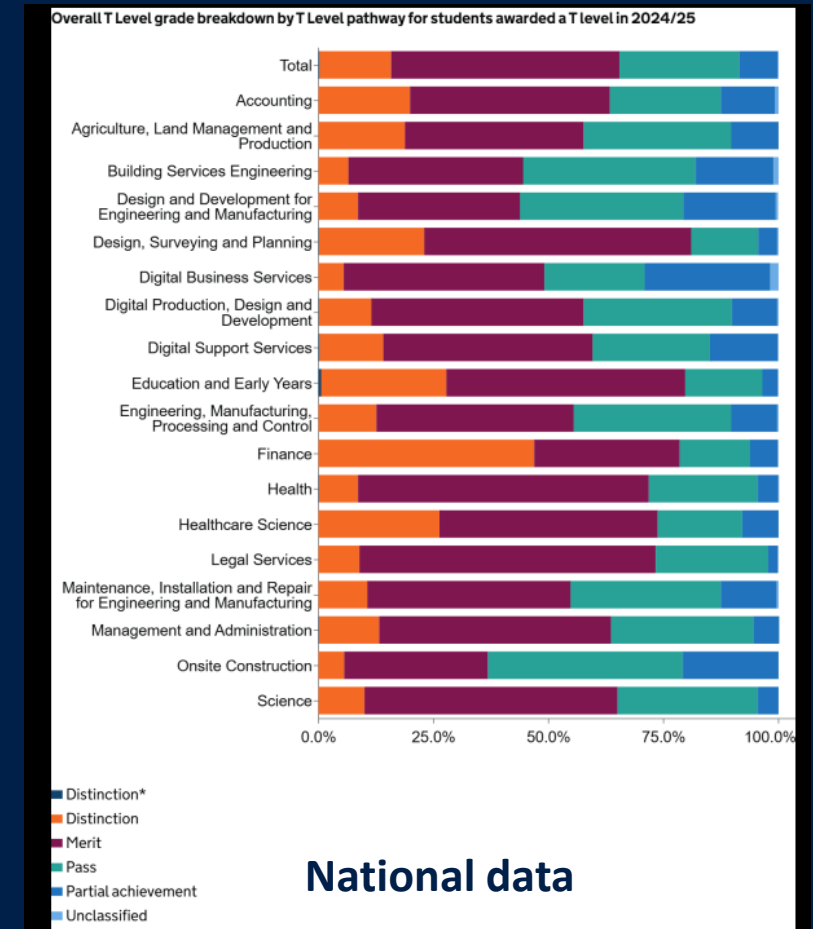


# You have every chance of success!

## T-Level

100% students were awarded at least a Merit  
50% achieved a distinction.

Wow!



These grades open doors and widen choices!

# GCSE resit...grabbing that



If your son/daughter need to re-sit their GCSEs, they are in fabulous hands!

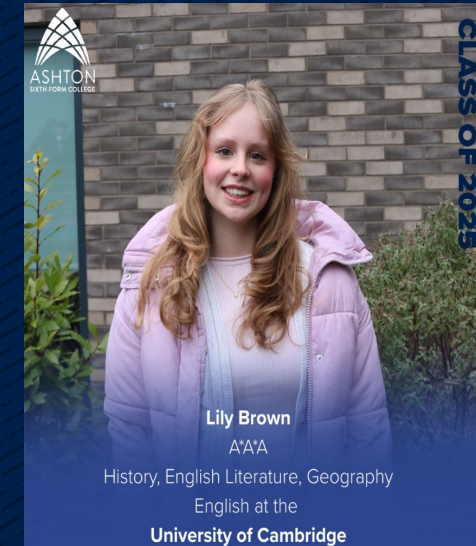
□ This year's resit students achieved above the national average for 17-19 year old resit students by 42% in English and 34% in Maths.

So, with focus and work there is every chance of success



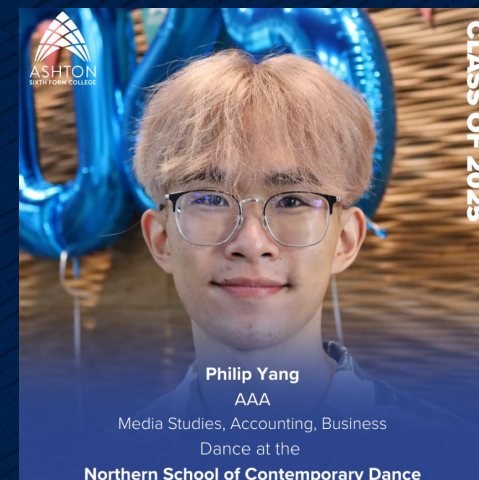
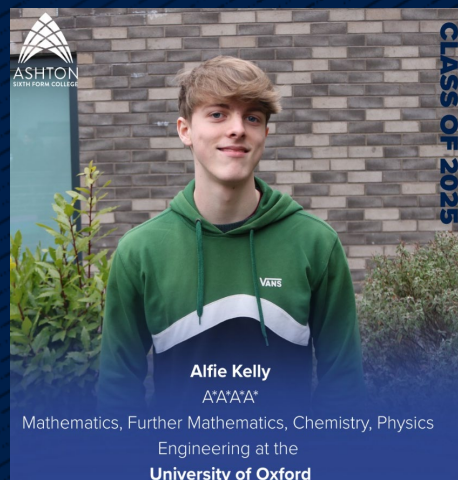


# Outstanding progression to chosen next steps





# Outstanding progression to chosen next steps





# Expectation: Respect

- Themselves
- Their peers
- Our staff
- Our environment and facilities
- Our neighbours and the wider community



# Expectations: our rules:

- Smoking and vaping – there will be a designated area. No other areas of college or the perimeter of college please.
- No food or drink in lessons apart from water.
- Drugs and drugs equipment – zero tolerance
- Parking – off site and respectfully
- Visitors – No
- Membership cards – should be worn at all times
- Clothes – mindful of professional environment

The above applies in college, representing college, during the college day (on study periods and travelling to and from college) and in social media and communications.



Two precious years...

# What students make of their time with us in in their hands....

... but, as 'learner adults', they will be in the best position to succeed if a secure three-way partnership is in place.

