



ASHTON
SIXTH FORM COLLEGE



Debbie Macintosh and Anita Blank
(Senior Tutor Managers)

SENIOR TUTORS



OFSTED 2025 report

"Tutors create welcoming and inclusive environments where learners feel valued. They benefit from a designated building and a team where they can seek help for matters related to their health, well-being and finance. Tutors understand learners' personal circumstances and the demands they face balancing work and study."





ASHTON
SIXTH FORM COLLEGE

The Pastoral Support System at ASFC

95% of respondents strongly agree/agree that “my Senior Tutor helps me keep on top of my punctuality and attendance in all lessons and checks up on all of my absences”

(Student Support Services Survey 2025)

The college minimum attendance requirement is 94%



Attendance Matters

- The college's "Attendance Matters" strategy challenges persistent student absenteeism, including the introduction of attendance/punctuality interventions and supported by communications with parents and guardians
- Students with high attendance receive positive recognition
- Senior Tutors can access up to date attendance/punctuality data at any time.

Attendance at classes is high.
(OFSTED 2025)

Students' behaviour is exemplary.
(OFSTED 2025)





ASHTON
SIXTH FORM COLLEGE

To ensure students attend lessons as they should, Senior Tutors will...

- Phone/text students and parents/guardians to chase absences and lateness
- Challenge *all* unexplained absences with the student; this includes extended periods of time (i.e. holidays)
- Initiate intervention for persistent absences/lateness
- Arrange for students to attend supervised sessions (Study+) to complete missed work as a result of absences.



Progression after Ashton

- At A1, tutorials include advice and guidance on which progression routes are available
- At A2, students are supported in making university and/or apprenticeship/employment applications.

“

"Leaders have planned a very broad and effective range of activities to help students and learners understand their future career options. Curriculum teams weave employer talks, alumni visits and workplace visits through the curriculum. Students benefit from work experience placements and work-related learning where they work on real-life tasks set by employers. Learners visit universities to explore life in a higher education setting and hear academics and employers speak about future routes and job roles. Staff make sure that students access one-to-one careers appointments with careers advisers, where they discuss their aspirations, skills, qualities and interests."

(Ofsted 2025)

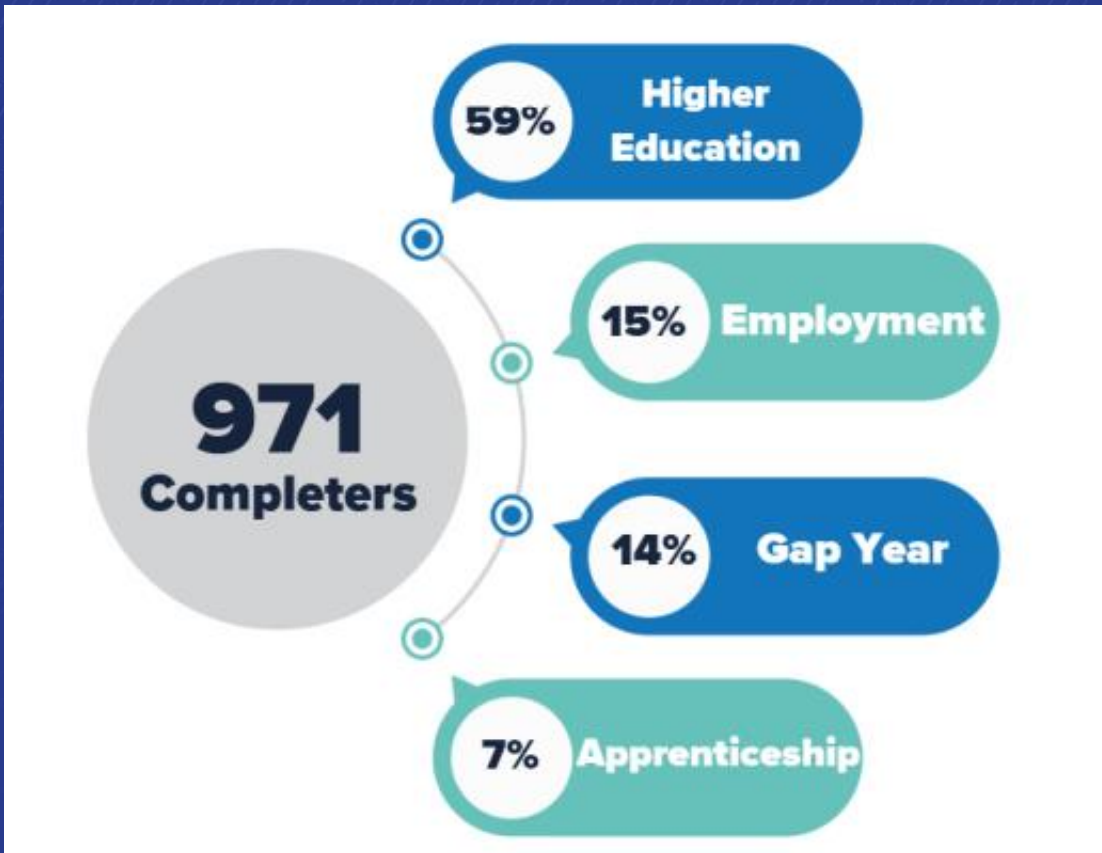
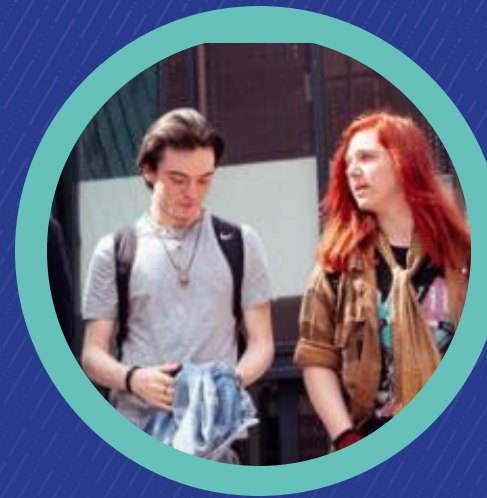
A1 Tutorials cover a range of topics which include:

- Help and guidance on how to settle into college life and Level 3 study
- The Government Prevent Strategy: extremism and radicalisation
- Health information on drugs, alcohol and vaping
- Healthy relationships and online safety
- Democracy, elections and voting
- Spotlights on current affairs and news events
- External speakers advising on sexual health (Locala), staying safe (Minus Violence) and building confidence (Loudspeaker)
- Careers advice and guidance; looking at university, apprenticeships and employment. With all A1 students supported in attending the UCAS Discovery Manchester in March

A2 Tutorials: Include support for UCAS, apprenticeship and employment applications

UCAS	Employment & Apprenticeship
Support and Guidance for UCAS applications (including Oxbridge, Dentistry, Medicine and Veterinary Science)	Support and guidance with apprenticeship applications
Preparation for interviews	Support and guidance from the college Careers team
Support and guidance for applying for Student Finance	CV building
Personal finance and budgeting	Telephone/video/skype interviewing techniques
Part time work at university	Mock interviews
Personal safety at university	Guest speakers from employment and apprenticeship providers
Researching Careers post university	Preparation for assessment <u>centres</u>

Student Destinations 2024/25





ASHTON
SIXTH FORM COLLEGE



The Pastoral Support System at ASFC

“Students enjoy coming to college, where they appreciate the helpful and supportive teachers/tutors who, they say, give them the guidance they need to develop the knowledge and skills to move on to their next steps. Most students, including those with high needs, go on to university, apprenticeships or employment.”

(Ofsted 2025)

96% of students strongly agree/agree that "my Senior Tutor was knowledgeable about the UCAS/Apprenticeship/Employment process"

(Student Support Services Survey 2025)

Specific Support for Students

- Managing the transition to college
- Managing independent study commitments
- Personal finance
- Mental ill health and well-being
- Personal/family problems outside of college
- Housing and accommodation



Senior Tutors will...

- Deliver an induction programme in conjunction with cross-college services.
- Give students a clear identity and sense of belonging within the college.
- Provide appropriate support to students, always encouraging them to be active, self-motivated learners, setting their own standards and goals.
- Provide tutorial support for the college tracking system (Cedar).
- Liaise with, or refer to, relevant parties where appropriate, i.e. parents/carers, Inclusive Learning, college counsellor, careers, Tameside Careers, external agencies.

“

"Students and adult learners appreciate the diverse and inclusive culture of the college. They feel able to express themselves in a rich and diverse community."

(Ofsted 2025)

College Timetable and Study Day

Timetable
A-Level

	MONDAY	TUESDAY	WEDNESDAY	THURSDAY	FRIDAY
09:00		C	Tutorial IT1.2 (DW)	Biology ST3.IO (AH)	English Language 2.7 (KT)
10:00					
11:00	B	D	English Language 2.7 (KT)	C	Psychology C3.7a (SM)
12:00		English Language 2.7 (KT)	Psychology C3.7a (SM)	D Progress Period IT1.2b (DW)	Biology ST3.IO (AH)
13:00					
14:00	D	Psychology C3.7a (SM)	Biology ST3.IO (AH)	English Language 2.7 (KT)	C
15:00	E	Biology ST3.IO (AH)	C	Psychology C3.7a (SM)	D

College Timetable and Study Day

Timetable Vocational

	MONDAY	TUESDAY	WEDNESDAY	THURSDAY	FRIDAY
09:00	Sport Sports Hall (VC)	Sport C2.I (WS)	D	Sport L.I4 (AL)	Sport Sports Hall (LB)
10:00					
11:00	Sport L.I4 (AL)	D Progress Period IT1.2b (AB)	E	Sport C2.I (WS)	Sport Sports Hall (VC)
12:00					B
13:00	Sport C2.I (WS)	Sport Sports Hall (LB)		Sport Sports Hall (LB)	
14:00	Tutorial ITI.2 (AB)	Sport Sports Hall (VC)	B	E	Sport C2.I (WS)
15:00	Sport Sports Hall (LB)	Sport L.I4 (AL)		Sport Sports Hall (VC)	Sport C2.I (WS)



ASHTON
SIXTH FORM COLLEGE



Bursary Type

Vulnerable Bursary

- In Care or Care Leavers
- Claiming income support in their own right
- Claiming disability living allowance AND employment support allowance

Discretionary Bursary

- Household income related

www.asfc.ac.uk/home/support/bursary



- BURSARY
- LEARNING SUPPORT
- SENIOR TUTOR TEAM
- COUNSELLING
- ELITE SPORT PROGRAMME
- HEALTH & WELLBEING

YOU ARE HERE: SIXTH FORM COLLEGE • SUPPORT

SUPPORT



SUPPORT

- BURSARY
- LEARNING SUPPORT
- SENIOR TUTOR TEAM
- COUNSELLING
- ELITE SPORT PROGRA...
- HEALTH & WELLBEING >

Bursary and Free College Meals

Helen Wilcox - Bursary and Attendance Officer

h.l.b.wilcox@asfc.spt.ac.uk

0161 330 2330



Thank you for listening.

**If you have any questions, please
feel free to ask.**